

**Model:**

**GP-2UG**

*Emergency Survival Water Filter*

*\*Produces up to 20 gallons of water per day.*



**ASSEMBLY INSTRUCTIONS:**

1. Remove the housing and filter(s) from their protective packaging, checking each part against the diagram.
  2. *Wash hands before touching parts.*
  3. Place the sealing washer (5) over the threaded part of the filter (4).
  4. Place the filter(s) (4) into the hole(s) in the base of the upper section (2).
  5. Screw the wing nut (6) onto the threaded part of the filter extending through the base of the upper section. Hand-tighten the wing nut to seal and compress the sealing washer to secure the filter(s) in place. Repeat steps 3-6 for each filter being used in the system.
  6. Place the tap washer (8) onto the threaded section of the tap (7). With the washer in place, insert the tap through the hole in the base of the bottom section (1). With the tap (7) in place, position the tap washer and tap nut (9) over the threaded part and tighten.
- NOTE:** Tap washer **MUST** be placed on the tap prior to inserting through hole in bottom section to ensure proper fit against leaks.
7. Place the upper section (2) into the bottom section (1) and place the lid (3) on top of the unit. Place entire unit on base (10). Assembly is complete.

**OPERATION:**

1. Ensure the outlet tap (7) is closed, tap handle is turned 90° to right side.
2. Remove lid (3) and fill upper section (2) with water.
3. Filtered water will collect in the bottom section (1) ready for use.

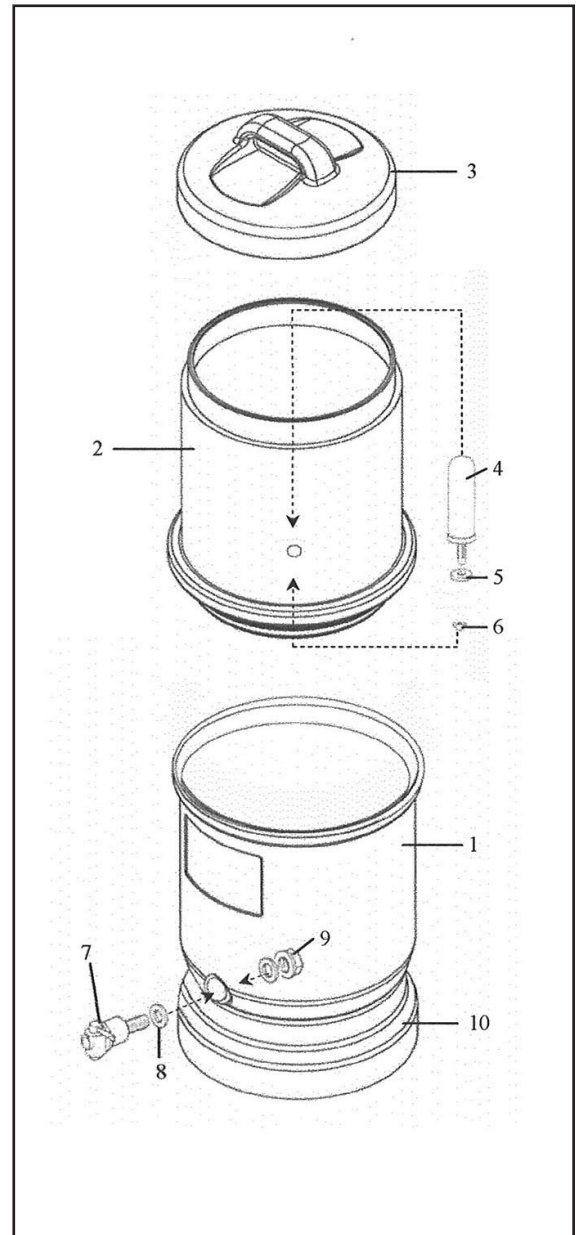
**NOTE:** We recommend the first supply of water to be discarded as it may contain loose ceramic and carbon material from the filter(s).

**SERVICING:**

The ceramic filter(s) (4) should be cleaned when there is a noticeable drop in filtration time. To clean the filter(s).

1. Wash hands before touching new/cleaned filter(s).
2. Remove filter(s) from the upper section by unscrewing the wing nut.
3. While holding the filter under running water or in a bowl of water, lightly brush the filter with 3M Scotchbrite abrasive pad. Always scrub away from the threaded end of the filter. **NEVER USE SOAP OR DETERGENT.**
4. Reassemble the filter as detailed above.

**NOTE:** If water is Not potable either add a chlorine disinfection tablet before putting water into filter unit or you can boil the water for 3-4 minutes, cool then add to filter unit.



GRAPHICSA11 WORKBRITISH GRAV FILCERAGRAVMODEL GP-1X • GP-2X'S INSTRUCTIONS

**Replace filters every 6 months.**

**Clean Water Revival, Inc.**

**1-800-444-3563**

**1-561-340-4000**

**www.cwrenviro.com**